



GMT MONTHLY MEMBERSHIP PROGRESS REPORT

Results as of: 6/30/2019

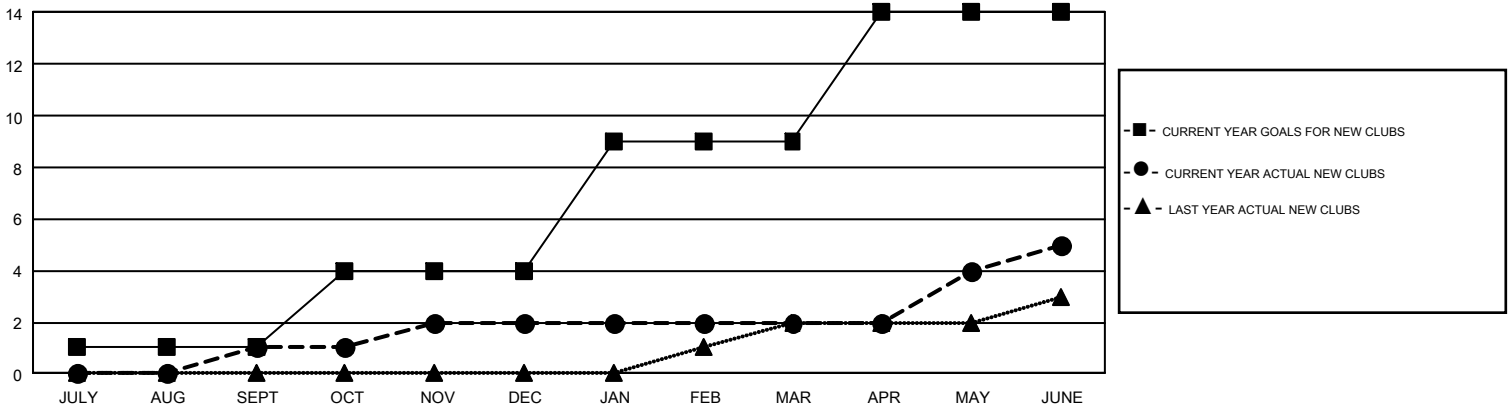
GMT Constitutional Area 2, Group A

GMT: GORDON ZIEGLER

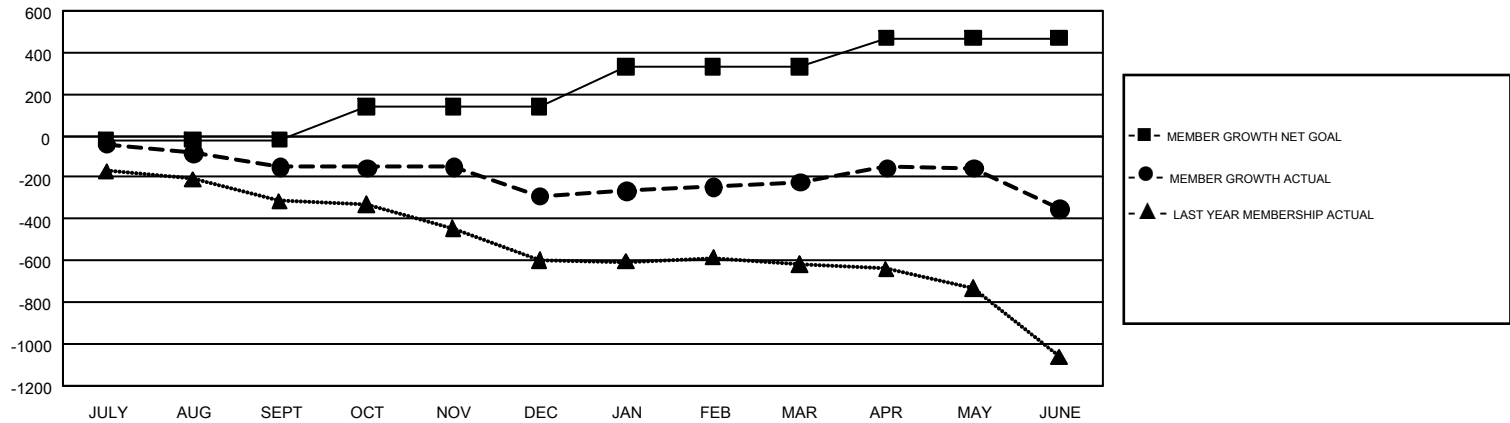
REPORT DOES NOT INCLUDE CLUBS IN UNDISTRICTED AREAS.

| Clubs | | | | Members | | | |
|-----------------------|---------------|-----------|---------------|-----------------------|------------------------|----------------------|--|
| RESULTS FOR 2018-2019 | | | | RESULTS FOR 2018-2019 | | | |
| QUARTER | NEW CLUB GOAL | NEW CLUBS | DROPPED CLUBS | QUARTER | MEMBER GROWTH NET GOAL | MEMBER GROWTH ACTUAL | DROPPED MEMBERS ACTUAL (including transfers) |
| JULY/AUG/SEPT | 1 | 1 | 1 | JULY/AUG/SEPT | -20 | 271 | 361 |
| OCT/NOV/DEC | 3 | 1 | 4 | OCT/NOV/DEC | 158 | 399 | 509 |
| JAN/FEB/MAR | 5 | 0 | 0 | JAN/FEB/MAR | 192 | 368 | 270 |
| APR/MAY/JUNE | 5 | 3 | 3 | APR/MAY/JUNE | 139 | 534 | 614 |

GOALS AND ACTUAL NEW CLUBS CUMULATIVE



GOALS AND ACTUAL MEMBERS CUMULATIVE



| | | |
|--|---|---|
| DROPPED CLUBS: 8 | 404 CLUBS OF 682 ADDED 1 OR MORE NEW MEMBERS | GENDER DISTRIBUTION MALE 10,521 (66.81%) FEMALE 5,227 (33.19%) |
| DROPPED MEMBERS DECEASED 222 CLUB CANCELLED 57 OTHER 1,475 TOTAL 1,754 | CLICK HERE FOR CUMULATIVE MEMBERSHIP DATA | TOTAL FAMILY UNIT MEMBERS 3,002 FAMILY MEMBERS PAYING HALF DUES 1,521 |